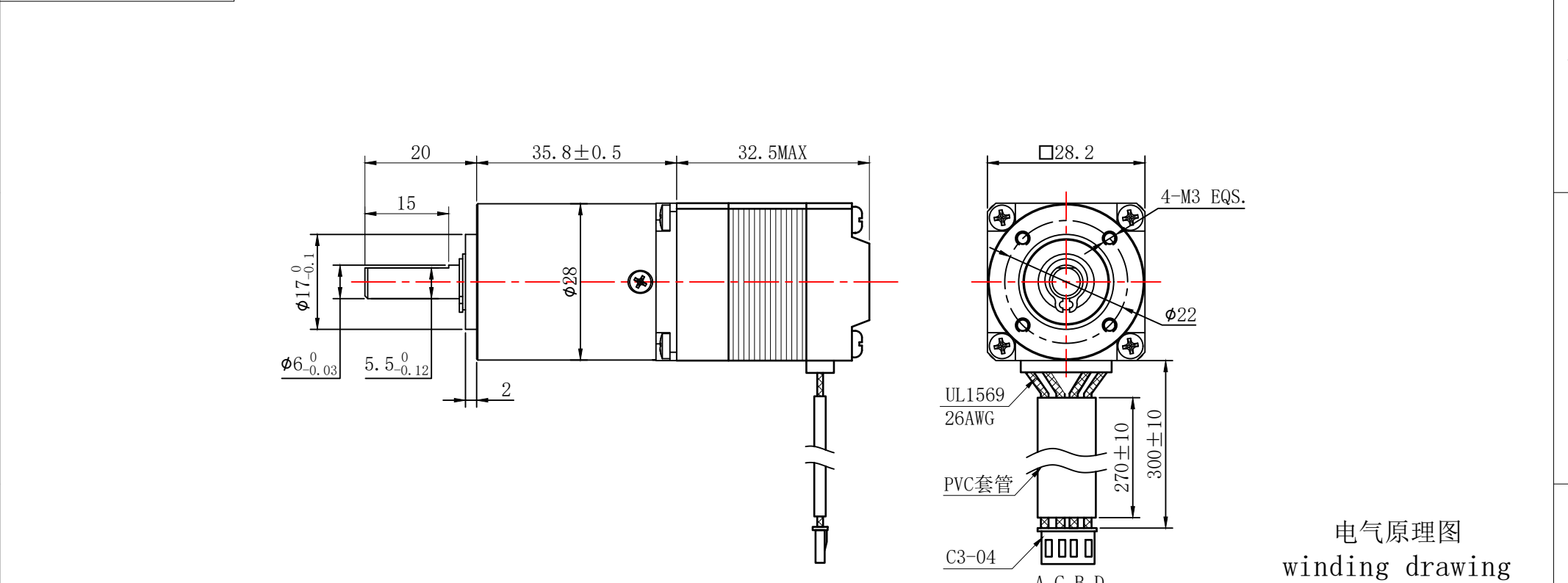
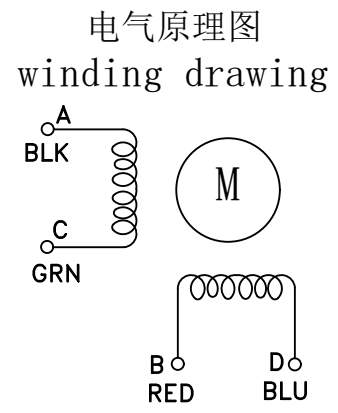


符合RoHS指令要求  
CONFORM TO RoHS DNSTROCTIONS



| 特性 character                          | 规格 specifications       |
|---------------------------------------|-------------------------|
| 1. 相数<br>Number of phase              | 2                       |
| 2. 步 距 角<br>Step Angle                | 1.8°                    |
| 3. 额定电压<br>Rated Voltage              | DC 3.88V                |
| 4. 额定电流<br>Rated current              | DC 0.67A                |
| 5. 保持转矩<br>Holding Torque             | ≥ 70mN.m                |
| 6. 相电阻<br>Winding resistance          | 5.8 $\pm$ 10% ohm(20℃)  |
| 7. 相电感<br>Winding inductaoce          | 4.2 $\pm$ 20% mH (1kHz) |
| 8. 转向 (轴伸向看)<br>Directlon of rotation | A-AB-B-CW               |
| 9. 转动惯量<br>Rotor Inertia              | 15 g.cm <sup>2</sup>    |
| 10. 电机重量<br>Weight                    | 0.2Kg                   |
| 11. 绝缘等级<br>Insulation class          | B Class                 |

减速比：1:24



|                                      |                   |           |                     |             |                          |               |                |            |  |             |                        |
|--------------------------------------|-------------------|-----------|---------------------|-------------|--------------------------|---------------|----------------|------------|--|-------------|------------------------|
| 7. 相电感<br>Winding inductaoce         | 4.2±20% mH (1kHz) |           |                     | <b>UMot</b> | 视图<br>view               |               |                |            | 重庆优摩特科技有限公司<br>Chongqing UMot technology Co.Ltd. |             |                        |
| 8. 转向（轴伸向看）<br>Directlon of rotation | A-AB-B-CW         |           |                     |             | 比例<br>inverse proportion |               | 1：1            |            |  |             |                        |
| 9. 转动惯量<br>Rotor Inertia             | 15 g.cm²          |           |                     |             |                          |               |                |            |  |             |                        |
| 10. 电机重量<br>Weight                   | 0.2Kg             |           |                     |             |                          |               |                | A0         |  |             |                        |
| 11. 绝缘等级<br>Insulation class         | B Class           | 标记<br>REV | 修改内容<br>Description | 日期<br>Date  | 设计<br>INSPECTED          | 审核<br>CHECKED | 批准<br>APPROVED | 日期<br>Date | 版本<br>Version                                    | 型号<br>Model | 28HS2401-28PG24JZS-300 |